



MOONHOPPER GAMES

Products Catalogue 2025



www.moonhopper-games.com

Index.

Base Paints

3

Technical Paints

5

Glazes

8

Shading Mediums

10

Flock Pots

12

Terrain Pots

13

Mixed Terrain Pots

14

Rock Pots

15

Grasses

16

We are Moonhopper Games

18

Prices shown in this catalogue are the Recommended Retail Prices, and are correct as of December 2024.

Base Paints

Our base paints range is specially designed to be mixed, and can be applied with a normal brush or diluted down for airbrush use. All Moonhopper paints have been designed and developed by gamers for gamers. It is therefore no surprise that a fair number of our customers are commissions painters.

All of our paint ranges are designed to be mixed to allow you to produce the whole colour spectrum, so that you don't have to buy several unnecessary paints to get a specific shade, tone or effect. Mix our colours with our base mono paints, or dilute accordingly, and you'll get just as good a result as you would if you were using some brand specific range paints. Our paints are not just premium quality, they'll save you money too.

Moonhopper paints come in good old fashioned, robust 20ml pots, have an excellent shelf life, and work well with most mediums, plastics and metals.



Each pot contains the highest quality acrylic paint, our specially formulated flow medium and two silicate balls to enable quick mixing when shaken.

Our paints have a long lasting shelf life and deliver quality results time after time.



Base Paints

MG2200 - Base Black	£ 2.95
MG2300 - Base White	£ 2.95
MG2400 - Base Grey	£ 2.95
MG2501 - Base Red	£ 2.95
MG2502 - Base Orange	£ 2.95
MG2503 - Base Yellow	£ 2.95
MG2504 - Base Green	£ 2.95
MG2505 - Base Blue	£ 2.95
MG2506 - Base Indigo	£ 2.95
MG2507 - Base Violet	£ 2.95
MG2508 - Base Brown	£ 2.95
MG2509 - Base Rust	£ 2.95
MG2510 - Coproxide Blue	£ 2.95
MG2511 - Caelum Blue	£ 2.95
MG2512 - Bile	£ 2.95
MG2513 - Flesh	£ 2.95
MG2514 - Base Pink	£ 2.95
MG2520 - Base Magenta	£ 2.95
MG2600 - Matt Glaze (Transparent)	£ 3.95



Technical Paints

Moonhopper technical paints are specially formulated to give specific finishes and a perfect result every time. From desert spoil to boggy soil, from mudbaths to bloodbaths, we have a medium that mixes well with other paints and pigments.

As well as practical effects, our metallic finishes also can be weathered, tempered and layered with ease. These can also be used to great effect in conjunction with our Shading Mediums (see Page 10). These paints are particularly well suited for Dry Brushing effects, as well as edging and fine details.



Technical Paints

Textured paints

MG2010	Volcanic Lava	£2.95
MG2015	Martian Dustbowl	£2.95
MG2020	Desert Storm	£2.95
MG2025	Pastoral Green	£2.95
MG2030	Neptune Blizzard	£2.95
MG2035	Martial Blue	£2.95
MG2040	Psycho Lavender	£2.95
MG2045	Scorch Marks	£2.95
MG2050	Frostbite	£2.95
MG2055	Quagmire Brown	£2.95
MG2060	Khaki Dream	£2.95
MG2065	Ruin Dust	£2.95
MG2157	Castle Grey	£2.95
MG2162	Hurdy Verdigris	£2.95





Metallics

MG2070	Battle Bronze	£3.95
MG2075	Sword Silver	£3.95
MG2080	Forged Gold	£3.95
MG2085	Celtic Copper	£3.95
MG2167	Pewter	£3.95
MG2172	Pirate Pyrite	£3.95

Tonals

MG2122	Digger Yellow	£2.95
MG2127	Tank Green	£2.95
MG2132	Fighter Blue	£2.95
MG2137	Imperial Indigo	£2.95
MG2142	Violent Violet	£2.95

Subtle Satins

MG2112	Bloodbath!	£2.95
MG2117	Bubbling Lava Pit	£2.95

Glazes



Our glazes are designed to bring the best out of any translucent or transparent elements that need tinting or colouring. From subtle shades to phosphorescent effects, we have a glazing medium that will do the job.

Transparent Glazes

MG2148	Blue Visor	£3.95
MG2128	Orange Flash	£3.95
MG2133	Yellow Glaze	£3.95



Additive Glazes

MG2153	Purple Haze	£3.95
MG2123	Red Indicator	£3.95



Phosphorescent Glazes

MG2138	Green Glow	£3.95
MG2158	Orange Spark	£3.95
MG2163	Punky Pink	£3.95
MG2143	Blue Streak	£3.95

Shading Mediums

Moonhopper shading mediums are designed to bring out the fine details in models, as well as create a wide variety of shading and staining effects. These can be mixed and overlaid on acrylic paints, as well as diluted to give the right definition to the minutest of detailing on a model.



These are old school washes for adding subtle grungy shades to your models and terrain.

MG2605	Black Smoke	£3.95
MG2610	White Fade	£3.95
MG2615	Red or Bled	£3.95
MG2620	Blue Water	£3.95
MG2625	Varicose Purple	£3.95
MG2630	Brown Blight	£3.95
MG2635	Grey Day	£3.95
MG2640	Scruffy Green	£3.95
MG2645	Yellow Peril	£3.95
MG2650	Orange Venom	£3.95



Flock Pots



Moonhopper Flock Pots are a very fast way of landscaping terrain. Just apply some PVA glue to a surface, sprinkle on some flock, shake off the excess and use the remainder later on.

Terrain Pots



Each pot
contains
approximately
300g of terrain



Mixed Terrain Pots



Our ready mixed terrain pots are the definitive way to quickly prepare and decorate your battlefield.

With a realistic balance of aggregated materials, realistic floral attributes and perfectly balance colour aesthetics, you'll be pleased with the end result every time on your scenery or bases.

As always, these Mixed Terrain Pots are designed in conjunction with our other materials, paints and peripheral items. Just apply either PVA adhesive or similar to the surface of your terrain piece, and using a folded piece of paper, scatter the contents over the glued area.

The remainder will fall off, and can be used on another piece of terrain.

For bases, coat these in PVA and dip into the terrain for super quick coverage.

Designed to work well with our other scenic materials and paints, you can create amazing results in a fraction of the time that it would usually take to prepare similar aggregates.

The Mixed Terrain Pots are identical in size and volume to our normal Terrain Pots, holding approximately 260g of material.

Rock Pots



Rock Pots are designed to sit alongside paint pots
In convenient 20ml bottles, and contain approximately 40g of
material.

All of our packaging is made from recyclable PET-G.

MG4121	Obsidian	£ 2.95
MG4122	Argentumite	£ 2.95
MG4123	Aurumite	£ 2.95
MG4124	Adularia	£ 2.95
MG4125	Barney Rubble!	£ 2.95
MG4126	Pot of Gold	£ 2.95
MG4127	Cliff Face	£ 2.95
MG4128	Trollsnot	£ 2.95

Get your rocks off with our budget pots for scenics and
for dressing bases and dioramas.

These are the ideal size and look for miniature debris,
rubble and other random spoilage.

Non-toxic, but not suitable for small children under the
age of 12 and definitely not edible!

This item is only available on this website and a limited
number of trade suppliers.



Grasses

MG4010	Pasture Green	£ 4.99
MG4020	Scrubland Green	£ 4.99
MG4030	Weedy Scrub	£ 4.99
MG4040	Alien Tundra	£11.99
MG4050	Silver Desolation	£11.99
MG4060	Mount Vengeance	£11.99
MG4070	Volcanium Blossom	£11.99
MG4080	Transuranic Hogweed *	£11.99

Pasture Green, Scrubland Green and Weedy Scrub contain two sheets of 60 tufts. All other tuft boxes contain six sheets of 60 tufts each (our megaboxes).

Our grasses have been specifically designed to have as natural and organic look on the table top as possible. From verdant greens to disturbing purples, we've got your bases covered.

Tuft sizes are relatively even but will vary from tuft to tuft, and are fragile – handle with care.

Use with other Moonhopper Grass Tufts, terrain and flock materials to make your models really stand out.

* Contains luminous components.



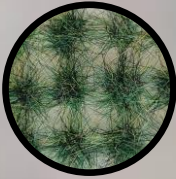
Our grass tufts are manufactured using the highest quality nylon material. Please store in a dry, cool place away from heat sources and direct sunlight.

All of our packaging is made from recyclable PET-G.

MG4010
Pasture Green



MG4020
Scrubland Green



MG4030
Weedy Scrub



MG4040
Alien Tundra
(Megaset)



MG4050
Silver
Desolation



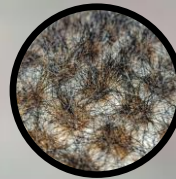
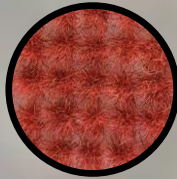
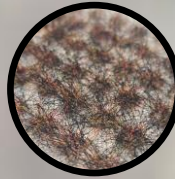
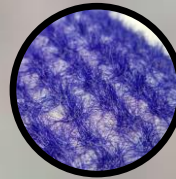
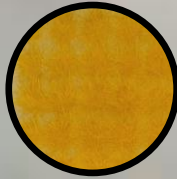
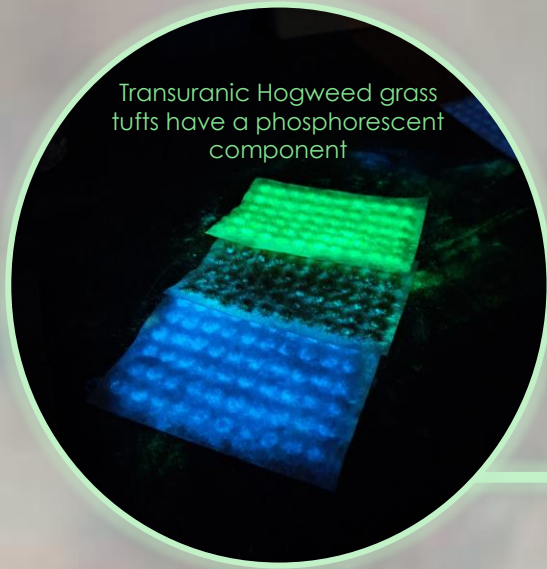
MG4060
Mount
Vengeance



MG4070
Volcanium
Blossom



MG4080
Transuranic
Hogweed



We are Moonhopper Games

We set up the company Moonhopper Games in 2020 because we have all been active modellers and artisans on the side for years – so we know what we like, what we'd use, what does the job and how it's supposed to be used – and most importantly how much we'd want to pay for things.

Whether you play Warhammer at weekends, Kings of War after work, have spent the last few weeks re-enacting the Battle of the Bulge, indulge in nail art or model railways, or like dressing up as Darth Vader or strutting around conference centres once a month dressed as a Gnome, we're sure we have something here for you.

So, that's us in a nutshell. Decent prices, decent service, quality materials and amazing models amongst other things.

We're open to trade enquiries and have very reasonable terms and conditions for traders. If you would like to work with us, please give us a call or drop us a line. There is also a link at the bottom of our website for trade account enquiries.

To see what we're up to day-to-day, please follow us on social media – we're active on Facebook, Instagram and BlueSky Social platforms.





All models and scenic materials/models shown here were painted and prepared with Moonhopper Games products



MOONHOPPER GAMES

(a trading name of Starjammer Engineering)
Unit 6 Southmoor Lane Workspace
Southmoor Lane Workspace
Havant
Hants
PO9 1JW

Registered in England and Wales No: 04651218
VAT Registration Number: GB818007152

Follow us on social media



 02393 092099

 info@moonhopper-games.com

 www.moonhopper-games.com



Trade account enquiries welcome. Please contact us in the first instance using the link on our website. For any other enquiries, please phone or email us.

Moonhopper Games has taken steps to ensure that slavery and human trafficking is not taking place in any of our supply chains, or in any business that we work alongside.